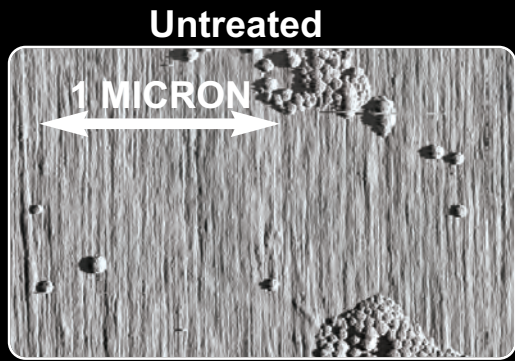
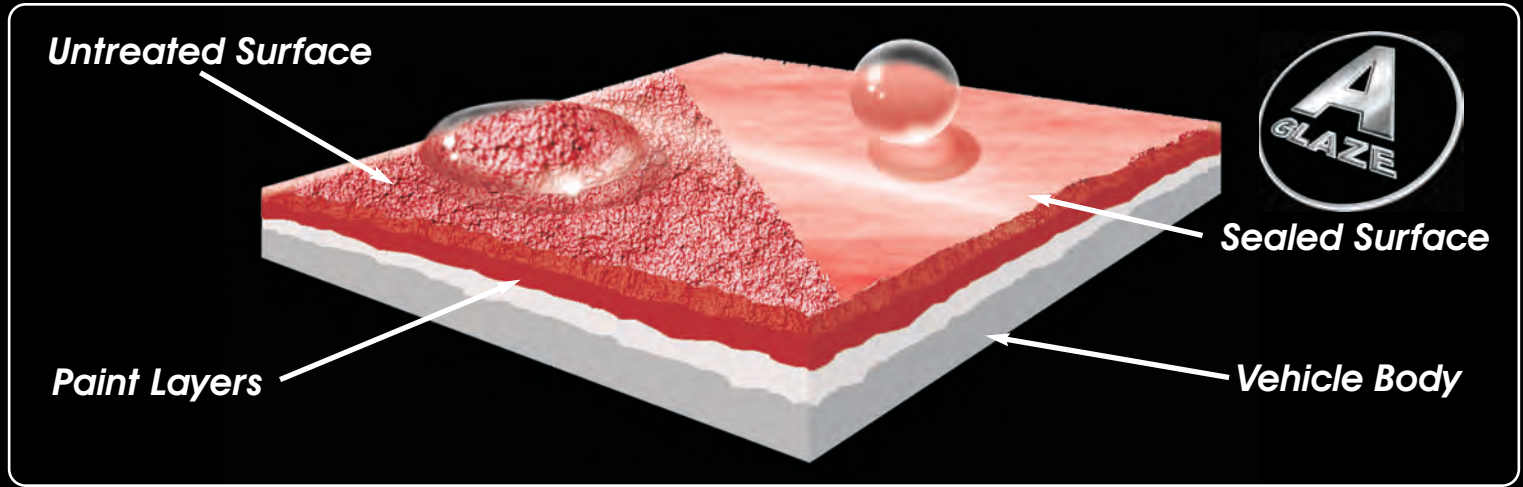


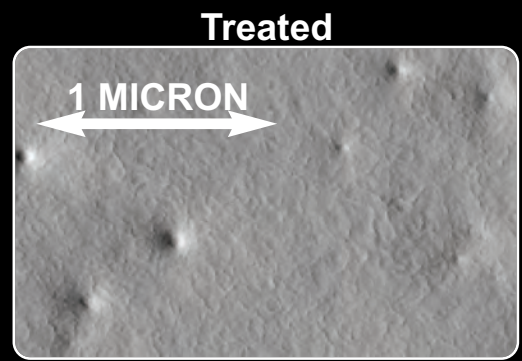
# AGlaze Surface Sealant .....in action



The following images show the AGlaze Surface Sealant in action. As the Sealant cures, it bonds to the substrate creating an ultra thin, and far more uniform layer of protection. This new smoother finish no longer provides a "key" for dirt particles to stick to and is much more water repellent as well as being resistant to acid rain and industrial fallout. The smoother surface has less drag than before and so the flow of fluids and air across the surface is also improved. In addition the sealant also contains specialist UV absorbers which absorb UV rays and release them as harmless infra red, preventing UV damage to the treated surface.



These two electron microscope images show cellulose before and after treatment. Once treated the resulting surface is far smoother, reducing friction and creating a more non-stick finish. Dirt particles are less able to stick to the surface making it much easier to clean and resistant to a wide range of pollutants.



The image below shows the difference in water repellence between an untreated and treated painted surface



The image below shows the difference in water repellence between an untreated and treated fabric surface

